



Xin Hua Hospital Brief Introduction

since 1958

郑忠民
2018.3.7

上海交通大学医学院附属新华医院

XINHUA HOSPITAL



Index

01 Past & Present

◆-----◆



02 Vision

◆-----◆

03 Xin Hua Culture

◆-----◆

1

Past & Present



上海交通大学医学院附属 **新华医院**

Xinhua Hospital Affiliated To Shanghai Jiaotong University School Of Medicine



Hospital Briefing

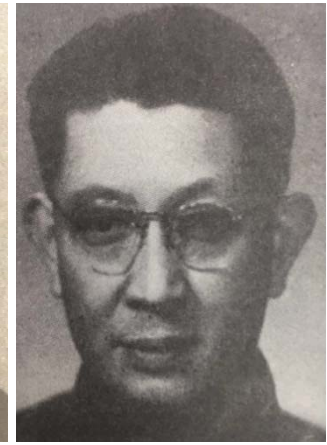
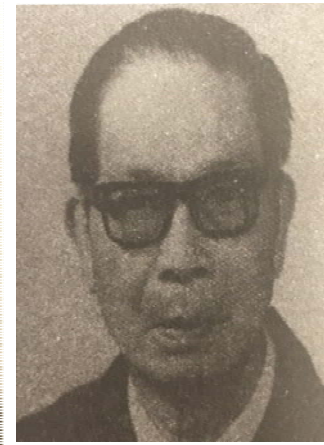
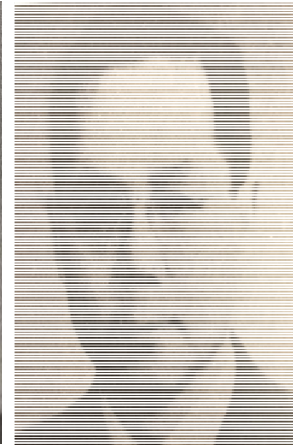
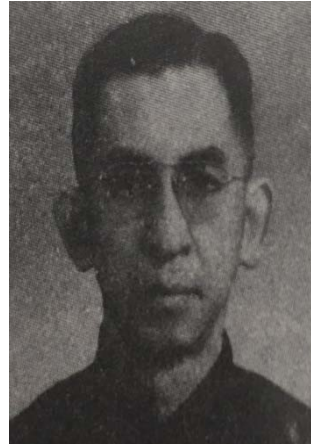
- ✓ Founded in 1958, the first general hospital designed and established by Shanghai people after the founding of New China.
- ✓ With a complete installation of pediatric and adult disciplines and distinct features, the hospital provides medical care for patients from 0 to 100 years old.
- ✓ The number of outpatient and emergency visits is among the top in Shanghai.
- ✓ It is the Pediatrics teaching base of SJTUSM .
- ✓ Xinhua Children's hospital was established in June 1, 1962.
- ✓ It took ten years to establish Shanghai Children's Medical Center.



上海交通大学医学院附属 **新华医院**

Xinhua Hospital Affiliated To Shanghai Jiaotong University School Of Medicine

Lasting Fame



Gao Jinglang

A leading authority of pediatrics in China

Guo Di

Founder of children's health care in China

Tian Xueping

Founder of perinatal medicine in China

Li Piguang

Former director of internal medicine, Nanjing Central Hospital

Liang Qichen

Perform the 1st case of open heart surgery for pulmonary stenosis in China

He Shangzhi

Create He-style incision suture

- First case of conjoined twins separation
- First case of infant open heart surgery
- Take the lead in developing intracapsular cataract extraction
- Take the lead in radical resection of congenital megacolon

- Take the lead in developing special decompression of congenital polycystic kidney disease
- Take the lead in the treatment of systemic jaundice with an enzyme formula
- Take the lead in correcting kyphosis and scoliosis
- First to set up pediatric asthma specialist clinic



上海交通大学医学院附属 **新华医院**

Xinhua Hospital Affiliated To Shanghai Jiaotong University School Of Medicine

Profile



Area: **73,000m²**

Floor area: **192,000m²**

Authorized beds: **1773**

Open beds: **2090**

Staff: **3695**

Ratio of professional and
technical personnel: **85.5%**



上海交通大学医学院附属 **新华医院**

Xinhua Hospital Affiliated To Shanghai Jiaotong University School Of Medicine



Profile

Covering a full life cycle

59 Clinical departments

95 Disciplines & subdisciplines

10 national key clinical specialties

Clinical Laboratory, Clinical Pharmacy, Otolaryngology-Head and Neck Surgery, Cardiothoracic Surgery, Pediatric Respiratory of Pediatrics, General Surgery, Department of Dermatology, Pediatric Traditional Chinese Medicine, Pediatric Surgery and Emergency Medicine

**6 centers for diagnosis and treatment/
rescue at provincial level**

Children's Stone Diagnostic and Treatment of National Health and Family Planning Commission, Shanghai Clinical Center for Pediatric Surgery, Shanghai Critical Maternal and Newborn Consulting and Rescue Center, Shanghai Prenatal Rescue Center, Shanghai Diagnosis and Treatment Center for Hearing Disorders

**7 diagnosis and treatment centers of
Shanghai Jiao Tong University**

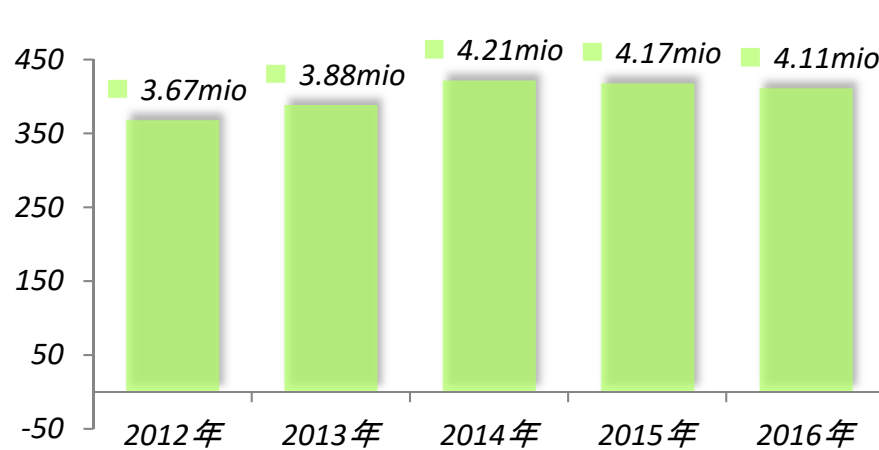


上海交通大学医学院附属 **新华医院**

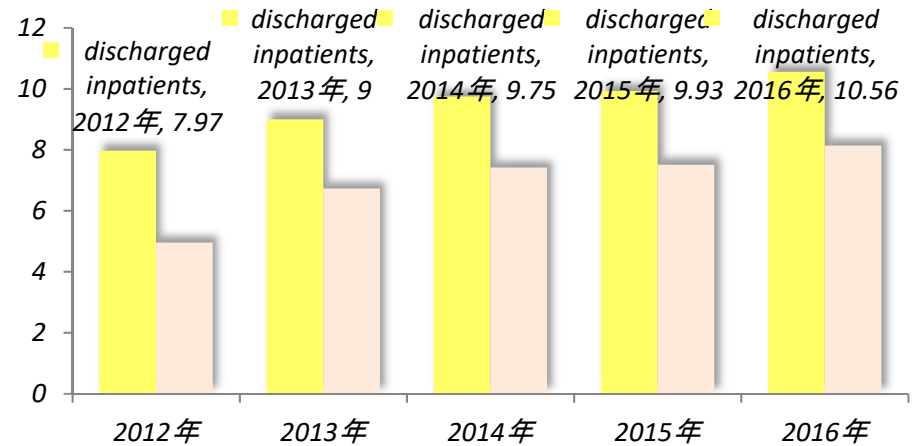
Xinhua Hospital Affiliated To Shanghai Jiaotong University School Of Medicine

Overall Operation

The number of outpatient visits, emergency visits & discharged patients ranks among the top in Shanghai



Average annual growth rate
of outpatient visits:
2.79%



Average annual growth rate
of discharged inpatients:
7.29%

Average annual growth rate
of surgical patients:
13.18%



上海交通大学医学院附属 **新华医院**

Xinhua Hospital Affiliated To Shanghai Jiaotong University School Of Medicine

Overall Operation



Fudan Hospital Rankings

34th

2015

Best hospitals
(comprehensive ranking)



Average Length of Stay

8th

2016

General hospital ranking

Number of Operations

20th

2017

China General Hospital
operation volume ranking



Nature Publishing Group

47th

2017

Nature's ranking



上海交通大学医学院附属 **新华医院**

Xinhua Hospital Affiliated To Shanghai Jiaotong University School Of Medicine

Education

Shanghai Jiao Tong University School of Medicine affiliated



上海交通大学医学院附属 **新华医院**

Xinhua Hospital Affiliated To Shanghai Jiaotong University School Of Medicine

Scientific Research



- MOE and Shanghai Key Laboratory of Children's Environmental Health
- Shanghai Institute of Pediatric Research
- Shanghai Key Laboratory of Translational Medicine on Ear and Nose diseases
- Shanghai Key Laboratory of Pediatric Gastroenterology and Nutrition
- Shanghai Institute of Colorectal Neoplasms Research
- Shanghai Institute of Biliary Tract Diseases Research



- Institute of Hospital Strategic Management, Shanghai Jiao Tong University
- Ear Institute, Shanghai Jiao Tong University School of Medicine
- Institute of Biliary Tract Diseases, Shanghai Jiao Tong University School of Medicine



上海交通大学医学院附属 **新华医院**

Xinhua Hospital Affiliated To Shanghai Jiaotong University School Of Medicine

Scientific Research

Scientific
Research
Center



Model Animal
Research Dept



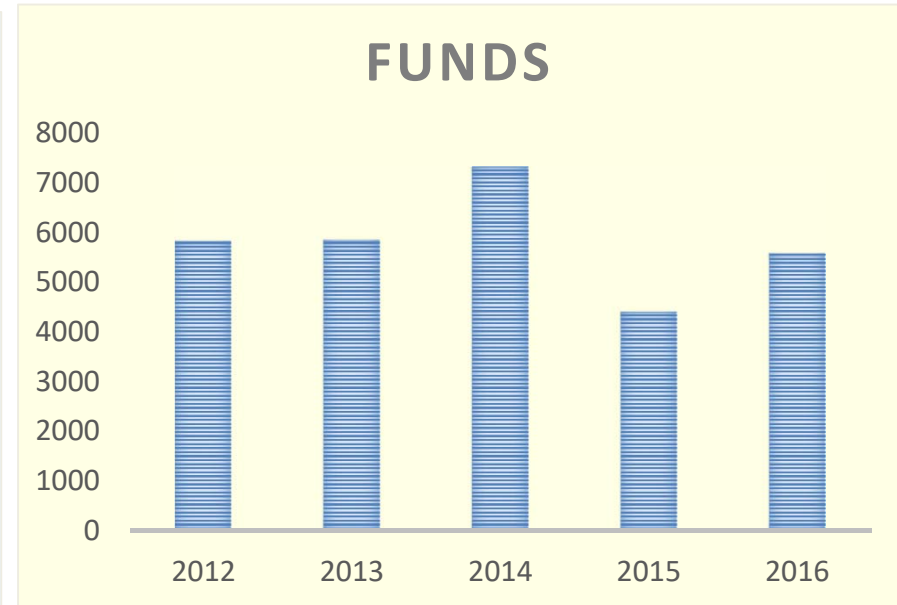
Bio Bank



上海交通大学医学院附属 **新华医院**

Xinhua Hospital Affiliated To Shanghai Jiaotong University School Of Medicine

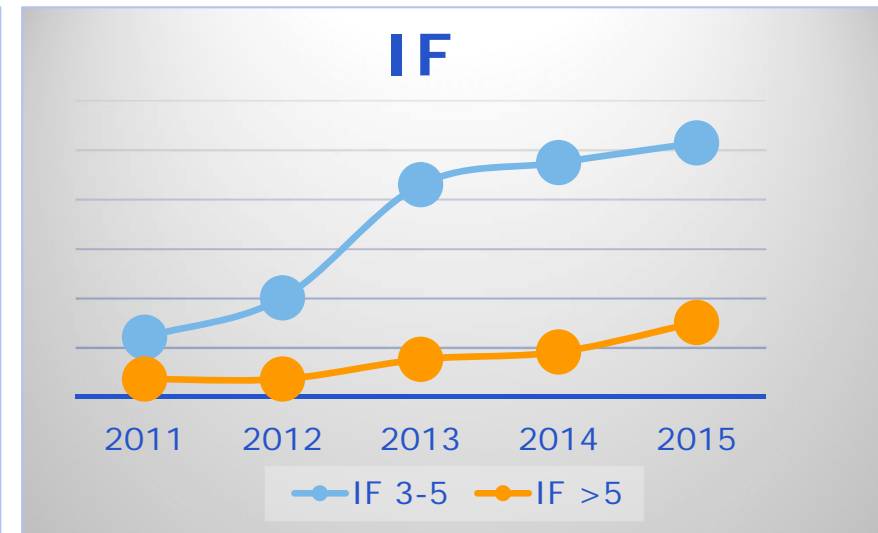
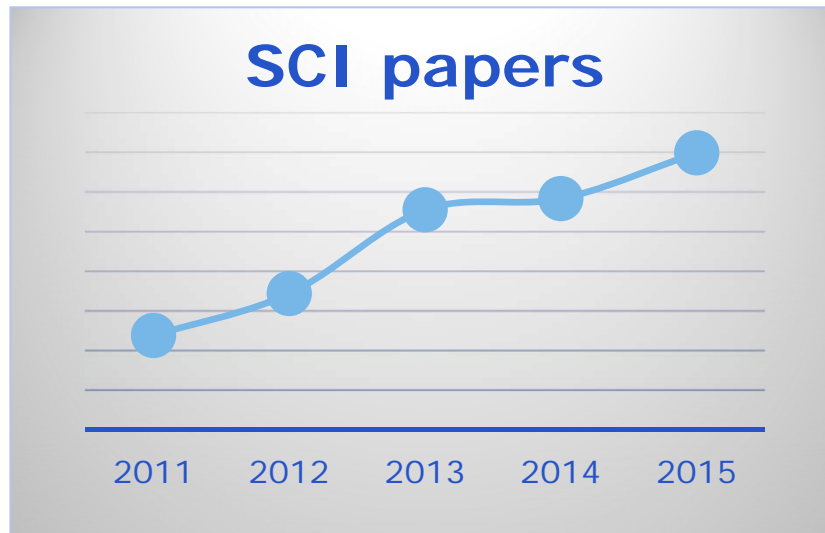
Scientific Research



Over the past five years, **769** research programs have been funded, with an investment of **289 million yuan**.



Scientific Research



Over the past 5 years, number of SCI papers has grown steadily

Number of high IF SCI papers increased obviously



上海交通大学医学院附属 **新华医院**

Xinhua Hospital Affiliated To Shanghai Jiaotong University School Of Medicine

Domestic Cooperation

Two Hospital Alliances headed by Xin Hua

- Xin Hua Pan Yangtze River Delta Hospital Alliance
- China Pediatric Alliance of General Hospitals

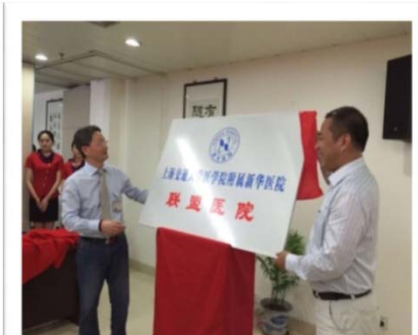
19 members

24 members



Xin Hua Pan Yangtze River Delta Hospital Alliance

- hierarchical treatment, green channel
- set up studio
- sub center construction for special disease diagnosis and treatment



上海交通大学医学院附属 **新华医院**

Xinhua Hospital Affiliated To Shanghai Jiaotong University School Of Medicine

International Exchange

Harvard Medical School



University of Ottawa Faculty of Medicine



Assistance Publique - Hopitaux De Paris



Cincinnati Children's Hospital Medical Center



The University of New South Wales &
Children's Cancer Institute Australia



Yang-Ming University



上海交通大学医学院附属 **新华医院**

Xinhua Hospital Affiliated To Shanghai Jiaotong University School Of Medicine

International Exchange

International conferences hosted:



The 6th Annual Meeting of Asia Pacific Pediatric Cardiac Society
The 2nd Oriental International Summit Forum on the Medical Imaging Education
The 2nd Xinhua International Summit on Pediatric Retinopathy
The 5th Symposium on Nutrition Improvement in four places across the Taiwan Straits
Shanghai International Conference on Digestive Diseases



上海交通大学医学院附属 **新华医院**

Xinhua Hospital Affiliated To Shanghai Jiaotong University School Of Medicine

2

Vision

—



上海交通大学医学院附属 **新华医院**

Xinhua Hospital Affiliated To Shanghai Jiaotong University School Of Medicine



Hospital planning

- *"13th Five-Year" planning objectives*

GOAL

Yangtze River Delta Regional Medical Center, based in Shanghai, radiation throughout the country, has certain international influence.

GUIDELINE

Strong connotation ; Effective results ;
Distinctive features ; Promoting development

STATUS

Play the core role of medical service system and explore the vertical integration of medical resources



CRU Platform

Xinhua Hospital independent operation clinical research center (CRU) integrates existing clinical and basic research resources, and provides management and technical support for clinical research involving human body.

Project management

Overall management of the CRU operation



Methodology

Guidance of project design, data analysis, article writing, etc.



Data management

Establishing hospital clinical data platform and clinical research project database

QC/Risk management

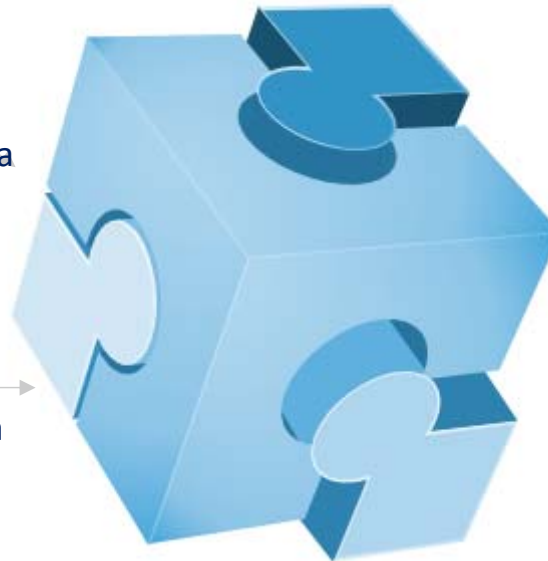
Monitoring clinical project quality and risk assessment

Patent/ Tech. Transfer

Promote the basic mechanism of clinical research, the implementation of patent planning



Training and exchange



Providing comprehensive supporting to Clinical Research via 6 functional modules



上海交通大学医学院附属 **新华医院**

Xinhua Hospital Affiliated To Shanghai Jiaotong University School Of Medicine

Clinical Research Unit

- *Xinhua-Harvard Innovation Center*
- *Xinhua-Harvard IVF Center*



Xinhua-Harvard Medical School

July 7, 2017 officially launched

- Direct connection with the Harvard team, tele-consultation and meeting
- Xinhua-Harvard Stomatological Center *coming soon*

Xinhua-Ottawa University

- Hearing and speech rehabilitation center
- May 24, 2017 was established.



上海交通大学医学院附属 **新华医院**

Xinhua Hospital Affiliated To Shanghai Jiaotong University School Of Medicine

Clinical Research Unit

- *Global Clinical Scholars Research Training Program*
- *Global Pediatrics Leadership Program*

Learning Form

Organic mixture of workshop, online studying and seminar

Overall objective

Advanced methodological training to clinicians and clinical researchers
Learning cutting-edge knowledge and concepts of Harvard Pediatrics



上海交通大学医学院附属 **新华医院**

Xinhua Hospital Affiliated To Shanghai Jiaotong University School Of Medicine

Early Life Plan

*Individualized treatment & Systematic treatment throughout
"One-Thousand-Days Plan"*



First 1000 Days of Life = Prenatal-Birth-Infant-Toddler

"The importance of First 1,000 Days After Conception"

——Jose M. Saavedra, John Hopkins School of Medicine (2014.5)

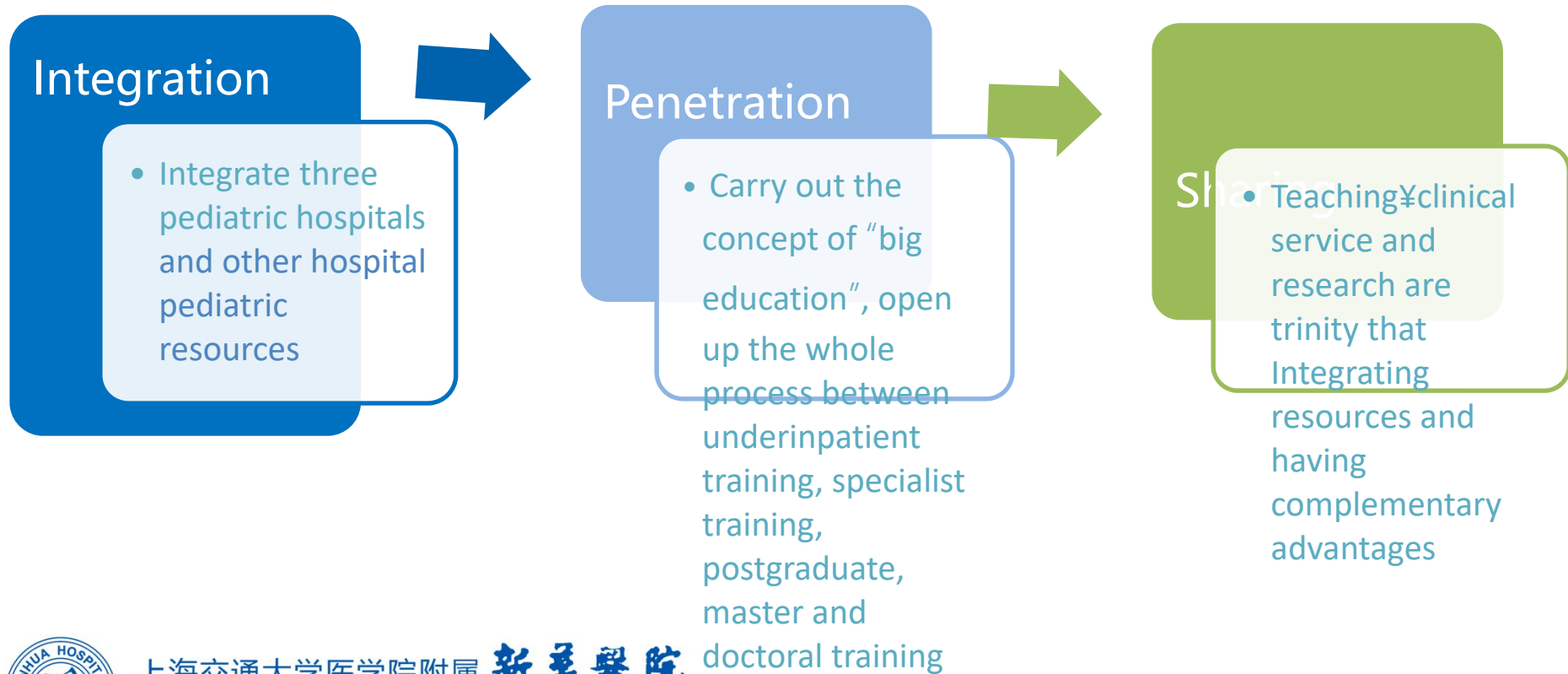


上海交通大学医学院附属 **新华医院**

Xinhua Hospital Affiliated To Shanghai Jiaotong University School Of Medicine

Pediatric Revival

- *College of Pediatrics affiliated to Shanghai Jiaotong University School of Medicine is under construction by Xinhua Hospital*



Pediatric rehabilitation

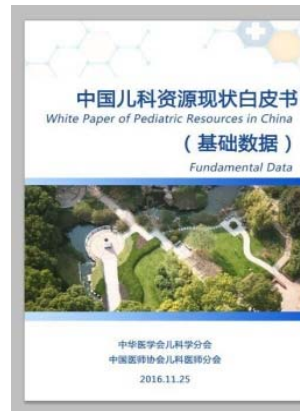
• *National Pediatric Union of General Hospital*

Launched and established by Xinhua Hospital

- 22 initial members located all over the country
- Publish the basic data of Chinese white book on pediatric resources, which is the first time to be released
- Widely reported by authoritative media such as, Xinhua news agency, people's daily etc.

《焦点访谈》 20160117 儿科医生缘何紧缺

发布时间：2016年01月17日 20:02 | 进入复兴论坛 | 来源：央视网 | 手机看新闻 | 手机看视频



上海交通大学医学院附属 **新华医院**

Xinhua Hospital Affiliated To Shanghai Jiaotong University School Of Medicine

Pediatric rehabilitation

- *Pediatric Medical Association*

Lead the establishment in northern Shanghai Pediatric Medical Union



- Take xinhua as leading unit
- Composed of medical institutions in four districts: Yangpu, Hongkou, Baoshan and Chongming District

Benefit more families through the easy access to qualified medical resources in the neighbourhood



上海交通大学医学院附属 **新华医院**

Xinhua Hospital Affiliated To Shanghai Jiaotong University School Of Medicine

Chongming Innovation Park

- *Healthcare Ecological Hive*
- *Xinhua & Harvard Medical School*

Service

Innovation

Training

Hatch



Chongming Innovation Park

Healthcare Ecological Hive



上海交通大学医学院附属 **新华医院**

Xinhua Hospital Affiliated To Shanghai Jiaotong University School Of Medicine

Improve Medical Environment



上海交通大学医学院附属 **新华医院**

Xinhua Hospital Affiliated To Shanghai Jiaotong University School Of Medicine

3

Xinhua Culture



上海交通大学医学院附属 **新华医院**

Xinhua Hospital Affiliated To Shanghai Jiaotong University School Of Medicine

Medical Social worker and Volunteer

Xinhua provide Medical Social Worker service

- Shanghai volunteer service base
- Fudan University social worker practice base
- On-site social workers, groups, cases
- Outpatient medical assistance
- Preoperative accompany



上海交通大学医学院附属 **新华医院**

Xinhua Hospital Affiliated To Shanghai Jiaotong University School Of Medicine

Medical Social worker and Volunteer

Nurse
Psychological
Assistance Group



On-site social
worker



Volunteer



上海交通大学医学院附属 **新华医院**

Xinhua Hospital Affiliated To Shanghai Jiaotong University School Of Medicine

60th anniversary coming soon

Organize cultural activities
develop dedication of hospital culture

Display Hospital cultural image
Shape a good environment
Create a historical atmosphere

“Party Building”
Series Story of Xinhua Staff

Demo achievement and mission
Enhance sense of belonging
Inspire team spirit

Annivesary Video

Brand Identity Syetem

60周年



Thank for your attention

Dream · Persistent · Passion



上海交通大学医学院附属 **新华医院**

Xinhua Hospital Affiliated To Shanghai Jiaotong University School Of Medicine

since 1958

